



1. Materials: see 3015 note 1.

2. When earth connection device is fitted for use with lead sheath cables the maximum diameter over lead sheath is as per column '03' in the table.

3. STAMPING : All glands to be stamped on the circular band in the following manner:

**Stamping Detail**

FIG A

HAWKE 501/453 SIZE / THREAD / ARMOUR RING TYPE / SEAL TYPE / I12GD ExdIIC  
 Exell ExTD - 60 + 100°C Baseefa06ATEX0056X A21 IP66   
 IEC Ex BAS06.0013X 0L70NA UK 1180 NEMA4X

e.g. HAWKE 501/453 C / M32 / W / S / I12GD ExdIIC  
 Exell ExTD - 60 + 100°C Baseefa06ATEX0056X A21 IP66   
 IEC Ex BAS06.0013X 0L70NA UK 1180 NEMA4X

Note. When FIG B arrangement is used the marking will be 501/453 RAC ..... and the temperature range will be -60°C to + 80°C

4. FINISH : This component may be coated or plated to suit the application.

5. OPERATING TEMPERATURE : The standard operating temperature range for this gland is FIG A -60°C to + 100°C. / FIG B -60°C to + 80°C

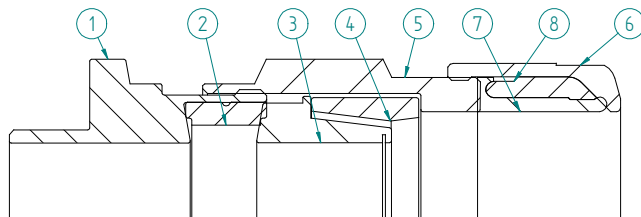
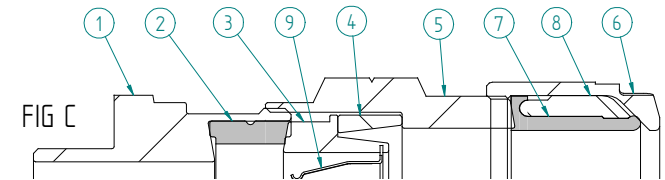
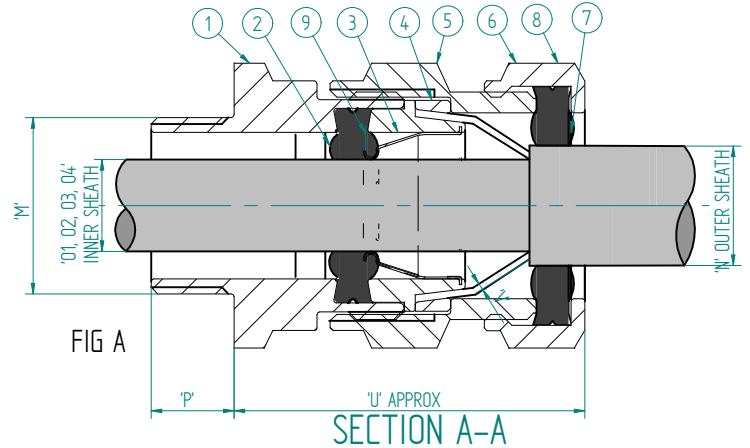
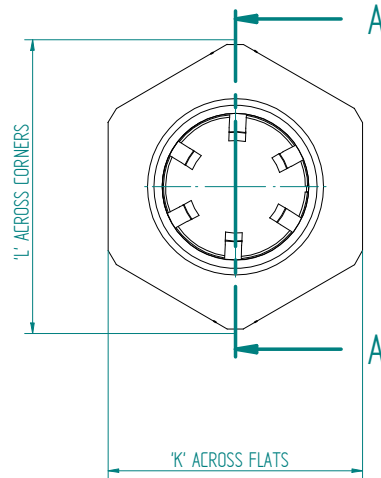
6. SPECIFICATION : In accordance with the relevant requirements of EN60079-0, EN60079-1, EN60079-7, EN 61241-1-1) and IEC60079-0, IEC60079-1, IEC60079-7 and IEC 61241-1-1.

7. CABLE : This gland is suitable for the following Elastomer or plastic insulated cables:- single steel wire, single aluminium wire, single and double tape armour, braided and unarmoured.

8. VARIATIONS : Alternative gland body can have larger external dimensions with respect to the male coupling thread that are equal or larger to those shown in the table.

9. An option to use the deluge boot, 3000, is available for improved sealing.

Item No.	Part No. Fig A	Part No. Fig B	Part No. Fig C	Description	Qty
1	3044		3273	Entry	1
2		3062 Std / 3005 Alt		Seal	1
3	3147	3047	3147	Spigot	1
4	3141(W), 3113(X), 3186(Z)	3041	3141(W), 3113(X), 3186(Z)	Compression ring	1
5	3155	3055	3272	Middle nut	1
6	3046		3034	Back nut	1
7	3048		3035	Back nut seal	1
8	3049		3036	Skid washer/Back nut clamp	1
9		3045 Optional		Continuity ring	1



SIZE REF	K	L	'M' THREAD SIZES Parallel threads are medium fit or better						'P' THREAD LENGTHS				CABLE				'V' ARMOUR							
			Metric Conduit	ET	BSPP BSPT	NPT	NPSM	Metric ET	BSPP	BSPT	NPT	NPSM	'O' INNER SHEATH		'N' OUTER SHEATH		'U'							
													O1 (3062) SEAL	O3 SEAL WITH 3045 FITTED	MAX	MIN		MAX	MIN					
G	106.4	123.0	M80	3 1/4"	3 1/4"	3 1/4"	3 1/4"	20.0	SEE 3016 DRAWING				73.0	67.0	68.5	67.0	89.5	75.0	121.0	3.15	0.3/0.45	0.4 or 0.8	3041	0.0-1.0 / 2.0-3.5
H	115.0	132.8	M90	3 1/2"	3 1/2"	3 1/2"	3 1/2"	20.0	SEE 3016 DRAWING				77.6	67.0	73.1	67.0	89.5	75.0	121.0	3.15	0.3/0.45	0.4 or 0.8	3041	0.0-1.0 / 2.0-3.5
J	127.0	146.7	M100	4"	4"	4"	4"	20.0	SEE 3016 DRAWING				91.6	75.0	87.1	75.0	104.5	88.0	121.0	4.0	0.3/0.45	0.4 or 0.8	3041	0.0-1 / 2.5-4.0

A3 THIS IS A CAD DRAWING AND MUST BE EDITED AT SOURCE

**HAWKE International**  
 OXFORD ST WEST  
 ASHTON-U-LYNE  
 OL7 0NA  
 TEL: +44 (0)161 308 3611

ALL COPYRIGHT RESERVED - HAWKE INTERNATIONAL 2005.  
 THIS DRAWING AND ALL COPYRIGHT THEREIN IS THE PROPERTY OF HAWKE INTERNATIONAL, A DIVISION OF HUBBELL LIMITED. (A member of the Hubbell Group of Companies).  
 (COPYRIGHT CC NOTATION: THIS DRAWING SHALL BE USED ONLY FOR THE PURPOSE FOR WHICH IT IS PROVIDED AND NO REPRODUCTION OR RE-CREATION OF THIS DRAWING MAY BE MADE AND NO ARTICLE MAY BE MANUFACTURED OR ASSEMBLED IN ACCORDANCE WITH THIS DRAWING WITHOUT THE PRIOR WRITTEN CONSENT OF THE OWNER.  
 REMOVE ALL BURRS AND SHARP EDGES USING MINIMUM CHAMFER OR RADIUS PARTICULARLY REMOVE ALL BURRS FROM START AND FINISH OF THREADS

3RD ANGLE PROJECTION  
 DO NOT SCALE IF IN DOUBT ASK  
 GENERAL TOLERANCES  
 LINEAR ±  
 ANGULAR ±  
 UNLESS OTHERWISE STATED

NEW REAR SEAL AND CLAMPING RING (FIG B) ADDED	A.T.	29/5/09	HCG	09/020	G
NEW BORDER, DWG FORMAT ALTERED, BOM ADDED, 1180 WAS 0600	A.O.	26/11/04	HCG	05/013	F
FIRST ISSUE	A.O.	02/05/01	HCG	01/012	A
MODIFICATION	DATE/SIG	DCN	ISSUE		
DRN	BR				
CHD	A.O.				
DATE	02/05/01				
UNITS	MM				

TITLE  
 GENERAL ARRANGEMENT OF  
 TYPE 501/453 OVERSIZED  
 ARMOUR CLAMPING GLAND.

DRG. No.  
**501/453 OVERSIZED**  
 (G TO J)  
 SCALE N.T.S. SHEET 1 OF 1

1. Materials: see 3015 note 1.

2. When earth connection device is fitted for use with lead sheath cables the maximum diameter over lead sheath is as per column 'O3 and O4' in the table.

3. STAMPING : All glands to be stamped on the circular band in the following manner:

Stamping Detail

HAWKE 501/453 SIZE / THREAD / ARMOUR RING TYPE / SEAL TYPE / II2GD ExdIIC  
 ExeII ExTD - 60 + 80°C Baseefa06ATEX0056X A21 IP66   
 IEC Ex BAS06.0013X OL70NA UK 1180 NEMA4X

e.g. HAWKE 501/453 C / M32 / W / S / II2GD ExdIIC  
 ExeII ExTD - 60 + 80°C Baseefa06ATEX0056X A21 IP66   
 IEC Ex BAS06.0013X OL70NA UK 1180 NEMA4X

4. FINISH : This component may be coated or plated to suit the application.

5. OPERATING TEMPERATURE : The standard operating temperature range for this gland is -60°C to + 100°C.

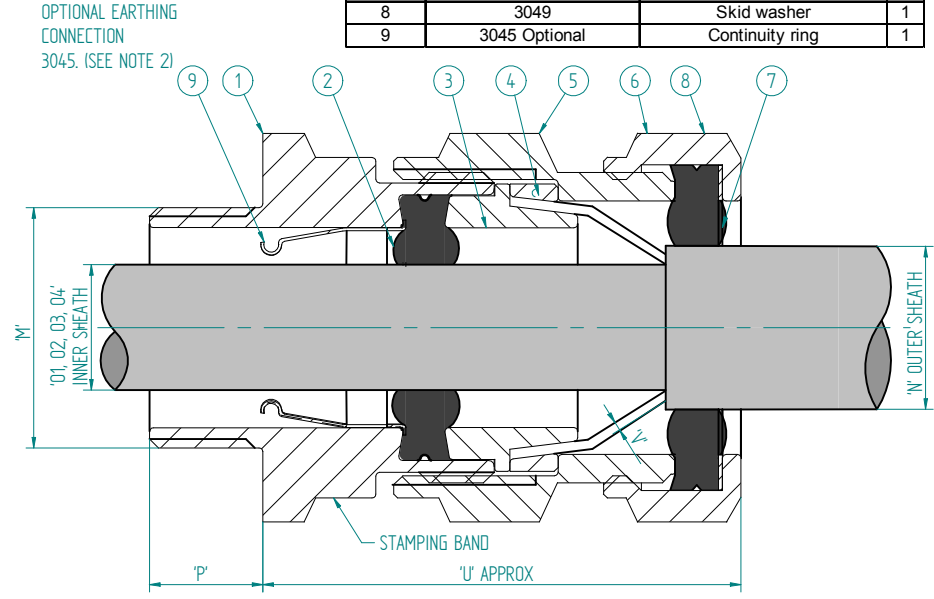
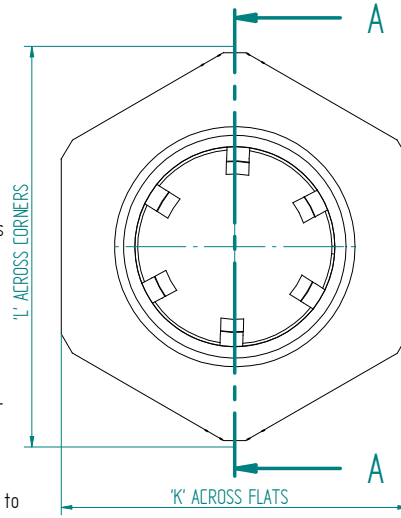
6. SPECIFICATION : In accordance with the relevant requirements of EN60079-0, EN60079-1, EN60079-7, EN 61241-1-1 and IEC60079-0, IEC60079-1, IEC60079-7 and IEC 61241-1-1.

7. CABLE : This gland is suitable for the following Elastomer or plastic insulated cables:- single steel wire, single aluminium wire, single and double tape armour, braided and unarmoured.

8. VARIATIONS : Alternative gland body can have larger external dimensions with respect to the male coupling thread that are equal or larger to those shown in the table.

9. An option to use the deluge boot, 3000, is available for improved sealing.

Item No.	Part No.	Description	Qty
1		Entry	1
2	3062 Std / 3005 Alt	Seal	1
3	3067	Spigot	1
4	3141(W), 3113(X), 3186(Z)	Compression ring	1
5	3155	Middle nut	1
6	3046	Back nut	1
7	3048	Back nut seal	1
8	3049	Skid washer	1
9	3045 Optional	Continuity ring	1



OPTIONAL EARTHING CONNECTION  
 3045. (SEE NOTE 2)

SECTION A-A

SIZE REF	'K'	'L'	'M' THREAD SIZES				'P' THREAD LENGTHS					CABLE						'U'	V' ARMOUR			
			Parallel threads are medium fit or better				Metric ET	BSPP	BSPT	NPT	NPSM	'O' INNER SHEATH		'N' OUTER SHEATH		MAX	MIN		(3141) SWA (W)	(3113) BRAID (X)	(3186) STRIP/ TAPE (Z)	
			Metric Conduit	ET	BSPP BSPT	NPT						NPSM	O1 (3062) SEAL	O3 SEAL WITH 3045 FITTED	MAX							MIN
G/F	106.4	123.0	M80	3 1/4"	/	3 1/2"	/	20.0	/	/	/	68.2	54.5	58.3	48.5	89.5	75.0	121.0	3.15	0.30.45	0.4 or 0.8	
J/H	127.0	146.7	M100	4"	4"	4"	4"	20.0	20.0	42.8	44.0	20.0	76.6	67.0	-	-	104.5	88.0	121.0	4.0	0.3/0.45	0.4 or 0.8

A3 THIS IS A CAD DRAWING AND MUST BE EDITED AT SOURCE

**HAWKE International**  
 OXFORD ST WEST  
 ASHTON-U-LYNE  
 OL7 0NA  
 TEL: +44 (0)161 308 3611

ALL COPYRIGHT RESERVED - HAWKE INTERNATIONAL 2005.  
 THIS DRAWING AND ALL COPYRIGHT THEREIN IS THE PROPERTY OF HAWKE INTERNATIONAL, A DIVISION OF HUBBELL LIMITED.  
 (A member of the Hubbell Group of Companies).

(COPYRIGHT CONDITION: THIS DRAWING SHALL BE USED ONLY FOR THE PURPOSE FOR WHICH IT IS PROVIDED AND NO REPRODUCTION OR PUBLICATION OF THIS DRAWING MAY BE MADE AND NO ARTICLE MAY BE MANUFACTURED OR ASSEMBLED IN ACCORDANCE WITH THIS DRAWING WITHOUT THE PRIOR WRITTEN CONSENT OF THE OWNER.

REMOVE ALL BURRS AND SHARP EDGES USING MINIMUM CHAMFER OR RADIUS PARTICULARLY REMOVE ALL BURRS FROM START AND FINISH OF THREADS

3RD ANGLE PROJECTION

DO NOT SCALE IF IN DOUBT ASK

GENERAL TOLERANCES

LINEAR ±  
 ANGULAR ±

UNLESS OTHERWISE STATED

NEW BORDER, DWG FORMAT ALTERED, BOM ADDED, 1180 WAS 0600	A.O.	26/11/04	HEG	05/013	F
FIRST ISSUE	A.O.	02/05/01	HEG	01/012	A
MODIFICATION	DATE/SIG	DCN	ISSUE		

DRN BR  
 CHD A.O.  
 DATE 02/05/01  
 UNITS MM

TITLE  
 GENERAL ARRANGEMENT OF  
 HYBRID TYPE 501/453  
 DEDICATED ARMOUR CLAMPING  
 GLAND.

DRG. No.  
 HYBRID 501/453  
 Dedicated (G TO J)  
 SCALE N.T.S. SHEET 1 OF 1